



# PHILIPPINE NOTICES TO MARINERS

**Edition No.: 10  
31 October 2020**

**Notices Nos.: 050 to 054**

---

## CONTENTS

- I Index of Charts Affected
  - II Notices to Mariners
  - III Corrections to Nautical Publications
  - IV Navigational Warnings
  - V Publication Notices
- 

Produced by the Hydrography Branch

Published by the  
Department of Environment and Natural Resources  
**NATIONAL MAPPING AND RESOURCE INFORMATION AUTHORITY**

Notices to Mariners – Philippine edition are now on- line at  
***[http:// www.namria.gov.ph/download.php#publications](http://www.namria.gov.ph/download.php#publications)***

*Subscription may be requested thru e-mail at [maritime.affairs@namria.gov.ph](mailto:maritime.affairs@namria.gov.ph)*

**THE PHILIPPINE NOTICES TO MARINERS** is the monthly publication produced by the Hydrography Branch of the National Mapping and Resource Information Authority (NAMRIA). It contains the recent charts correction data, updates to nautical publications, and other information that is vital for the safety of navigation on Philippine waters.

Copies in digital format may be obtained by sending a request through e-mail address: [css.gismb@namria.gov.ph](mailto:css.gismb@namria.gov.ph) or by downloading at the NAMRIA website: [www.namria.gov.ph/download.php](http://www.namria.gov.ph/download.php).

Masters of vessels and other concerned are requested to advance any report of dangers to navigation and other information affecting Philippine Charts and Coast Pilots which may come to their attention to the **Director, Hydrography Branch**. If such information warrants urgent attention like for instance the non-existence of aids to navigation or failure of light beacons or similar structure or discovery of new shoals, all concerned are requested to contact NAMRIA directly through the following portals:

Mail: NAMRIA-Hydrography Branch,  
421 Barraca St., San Nicolas, 1010 Manila, Philippines  
E-mail: [maritime.affairs@namria.gov.ph](mailto:maritime.affairs@namria.gov.ph)  
Fax: (+632) 8242-2090

The Hydrographic Note form at the back-cover page of this publication must be used in reporting information on dangers to navigation, lighted aids, and other features that should be included in the nautical charts.

An online form for reporting is also now available to the public. Log on to:

Philippine Online Maritime Safety Information System (OMSIS)  
<http://namria.gov.ph/omsis/landing.aspx>

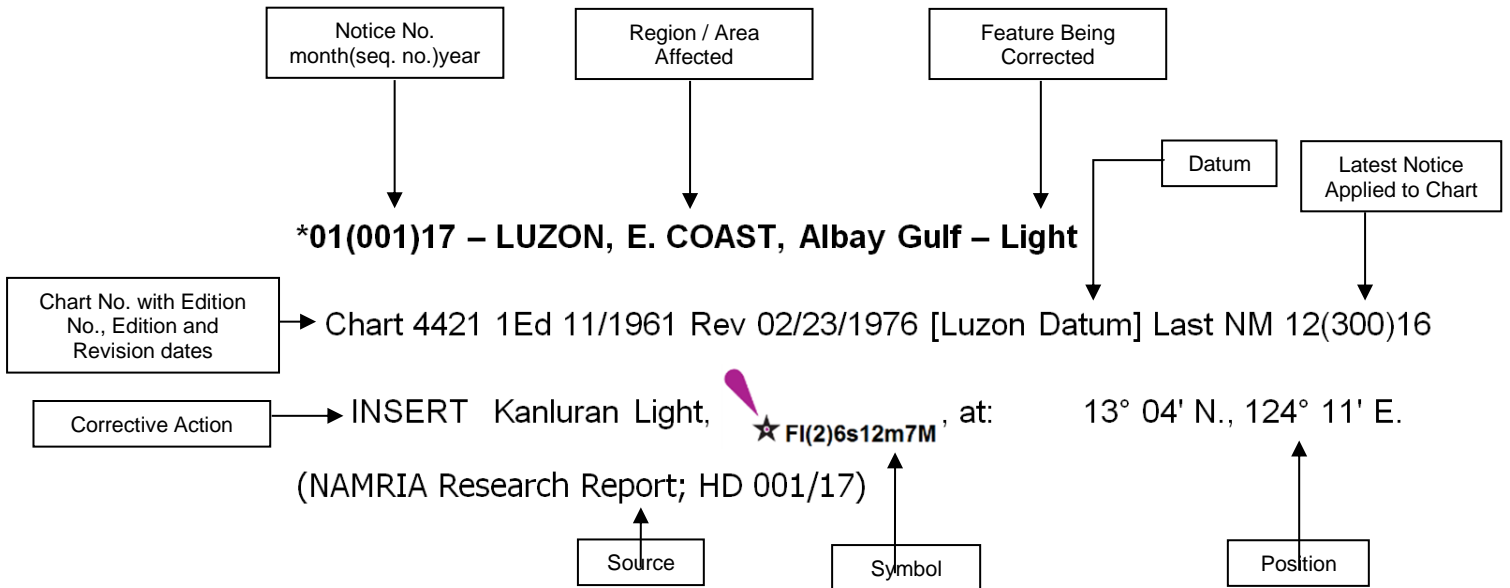
Sign-up and log-in to access the Electronic Hydrographic Note (e-HNote) to report. Other features such as Electronic Nautical Chart Correction Service (e-NCC) and Cumulative List can also be utilized upon subscription to OMSIS.

# Explanatory Notes

1. The Philippine Notices to Mariners is divided to following sections:

**Section I. Index of Charts Affected** – Contains the list of all nautical charts which have been affected by Notices to Mariners and the notice numbers which have affected them.

**Section II-A. Notices to Mariners** - Contains corrections to nautical charts in sequential number with the indication of the month and year of its issuance. The illustration below describes the elements that comprise a typical notice:



Notice No. preceded by asterisk “ \* ” indicates that the information is based upon original Philippine source.

**Section II-B. Temporary & Preliminary Notices** – Contains Notices to Mariners that temporarily affects the nautical charts or have preliminary information that is subject to further verification. The capital “P” or “T” affixed in the number of any notice denotes “preliminary” or “temporary”, respectively.

A list of Temporary and Preliminary Notices that are still in force, as well as those that are canceled, is published in this publication every month. The list may be read on page iv.

**Section III-A. Corrections to List of Lights** – Contains the corrections to the latest edition of the Philippine List of Lights. The entire entry for each light will be printed and the columns that contains updates will be denoted by an asterisk “ \* ”. All columns will be denoted by asterisks in the case of new lights.

This section is intended to be cut out and pasted on the section of the List of Lights that is being corrected.

All updates to lighted aids, including their operational status, will be published in this section. All directions and bearings are measured clockwise from true the North 000° to 360°. Bearing on lights is based on the observer from seaward toward the light. The visibility assigned to the lights never exceeds the calculated distance at which they can be seen from a height of 4.57 meters above the level of the water at high tide. Changes in aids to navigation, their maintenance and correction of deficiencies in operation are under the operation of the Philippine Coast Guard. Report of defects and

recommendations concerning aids to navigation should be forwarded to the Commandant of the Philippine Coast Guard.

**Section III-B. Coast Pilot Corrections** – Contains the corrections to the latest edition of the Philippine Coast Pilot book.

**Section IV. Navigational Warnings** – Contains the reprints of all previously issued navigational warnings that are still in effect as of the publication date of this edition of the Philippine Notices to Mariners.

**Section V. Publication Notices** – Contains the latest updates on the nautical charts, electronic navigational charts, and other nautical publications of NAMRIA.

2. NAMRIA issues Notices to Mariners and Navigational Warnings sourced from private entities, foreign publications, national government agencies, and local government units. Such information is published for the sake of safety of navigation on Philippine waters and does not imply recognition of the legal validity of the information issued by the abovementioned sources.
3. While every effort is made to ensure the accuracy of NAMRIA nautical charts and publications, users should bear in mind that it may not be complete or up-to-date, especially in areas where there are extensive developments. Mariners are advised to exercise prudence and to also refer to all navigational equipment aboard ship and use a lookout during navigation.
4. Masters of vessels are warned that great care should be exercised in navigating Philippine waters because of the low visibility and occasional failure of some navigational lights. Buoys and beacons are sometimes lost or destroyed specially after typhoons. Temporary deficiencies in the standard aids to navigation published in this office may have been corrected before subsequent notice is issued.
5. Positions obtained from satellite navigation systems, such as GPS, are normally referred to the WGS-84 Datum. Such position may only be plotted on NAMRIA nautical charts that are also referred to the WGS-84 Datum. Mariners should take note that due to the age and quality of some of information, such satellite-derived positions may be more accurate than charted details.

# **List of Temporary and Preliminary Notices**

(in force as of 31 October 2020)

- 05(036)P/19 – LUZON, W. COAST, Subic Bay – Buoy
- 04(023)P/19 – MINDANAO, N. COAST, Iligan Bay – Buoy
- 11(063)P/18 – LUZON, W. COAST, Subic Bay – Wreck
- 10(055)P/18 – LUZON, W. COAST, Manila Harbor – Wreck
- 06(033)P/18 – LUZON, W. COAST, San Fernando Harbor – Buoy
- 01(004)P/18 – SULU ARCHIPELAGO – Recommended Route
- 07(040)P/17 – MINDANAO, W. COAST, Moro Gulf – Recommended Route
- 02(014)P/17 – MINDANAO, N. COAST, Butuan Bay – Submarine Pipeline

## TABLE OF CONTENTS

Index of Charts Affected	1
Notices to Mariners	2
Temporary & Preliminary Notices	
List of Lights Corrections	7
Coast Pilot Corrections	9
Navigational Warnings	10
Publication Notices	39

**I**  
**INDEX OF CHARTS AFFECTED**

<b>Chart No.</b>	<b>Notice No.</b>		<b>Chart No.</b>	<b>Notice No.</b>
1501	10(051)20		4448	10(054)20
1523	10(052)20		4608	10(052)20
	10(053)20			
			4624	10(053)20
1564	10(050)20			
			4656	10(052)20
4214	10(050)20			10(053)20
4255	10(051)20		4706	10(050)20
4305	10(050)20		4708	10(052)20
4344	10(050)20		4714	10(050)20
			4723A	10(050)20
<b>Electronic Navigational Charts (ENC) Affected</b>				
PH2CMN40	10(052)20		PH2CVZ40	10(050)20
	10(053)20			10(054)20
			PH2NLZ40	10(051)20

## II NOTICES TO MARINERS

### \*10(050)20 – MINDORO, N. COAST, Port Galera – Lights

Chart 1564 1Ed 02/02/2012 [WGS-84 Datum] Last NM 11(072)19

Amend characteristics of Port Galera Light from Fl(3)R.3s18m7M to Fl.R.5s18m10M  
at: 13° 30.76' N., 120° 57.67' E.

characteristics of Varadero Light from Fl.G.5s26m7M to Fl.G.5s26m10M  
at: 13° 30.13' N., 120° 57.31' E.

characteristics of Escarceo Point Light from Fl.10s41m18M to Fl.10s10M  
at: 13° 31.28' N., 120° 59.53' E.

Chart 4214 2Ed 12/02/1991 [Luzon Datum] Last NM 11(070)19

Amend characteristics of Port Galera Light from Fl(3)R.3s18m7M to Fl.R.5s18m10M  
at: 13° 30.85' N., 120° 57.58' E.

characteristics of Varadero Light from Fl.G.5s26m7M to Fl.G.5s26m10M  
at: 13° 30.22' N., 120° 57.22' E.

characteristics of Escarceo Point Light from Fl.10s41m18M to Fl.10s10M  
at: 13° 31.37' N., 120° 59.45' E.

Chart 4305 2Ed 12/07/1992 [Luzon Datum] Last NM 05(027)19

Amend characteristics of Port Galera Light from Fl(3)R.3s18m7M to Fl.R.5s18m10M  
at: 13° 30.85' N., 120° 57.58' E.

characteristics of Varadero Light from Fl.G.5s26m7M to Fl.G.5s26m10M  
at: 13° 30.22' N., 120° 57.22' E.


characteristics of Escarceo Point Light from Fl.10s41m18M to Fl.10s10M  
at: 13° 31.37' N., 120° 59.45' E.

Chart 4344 1Ed 10/04/1965 Rev 06/29/1981 [Luzon Datum] 08(148)15

Insert  ★ Fl.10s10M at: 14° 46' 22.0"N., 120° 41' 26.9"E.

Amend characteristics of Port Galera Light from Fl(3)R.3s18m7M to Fl.R.5s18m10M  
at: 13° 30' 50.9"N., 120° 57' 34.9"E.

characteristics of Varadero Light from Fl.G.5s26m7M to Fl.G.5s26m10M  
at: 13° 30' 13.0"N., 120° 57' 13.3"E.

Delete  ★ Fl.10s10M at: 14° 46' 23.0"N., 120° 41' 27.0"E.



## II NOTICES TO MARINERS

### **\*10(050)20 – MINDORO, N. COAST, Port Galera – Lights (continued)**

Chart 4706 2Ed 12/2010 [WGS-84 Datum] Last NM 07(039)20

Amend characteristics of Port Galera Light from Fl(3)R.3s18m7M to Fl.R.5s18m10M  
at: 13° 30.8' N., 120° 57.7' E.

characteristics of Escarceo Point Light from Fl.10s41m18M to Fl.10s10M  
at: 13° 31.3' N., 121° 00.0' E.

Chart 4714 1Ed 09/14/1959 Rev 03/31/1986 [Luzon Datum] Last NM 11(072)19

Amend characteristics of Port Galera Light from Fl(3)R.3s18m7M to Fl.R.5s18m10M  
at: 13° 30.9' N., 120° 57.6' E.

characteristics of Varadero Light from Fl.G.5s26m7M to Fl.G.5s26m10M  
at: 13° 30.2' N., 120° 57.2' E.

characteristics of Escarceo Point Light from Fl.10s41m18M to Fl.10s10M  
at: 13° 31.4' N., 120° 59.4' E.

Chart 4723A 2Ed 12/22/2018 [WGS-84 Datum] Last NM 09(048)20

Amend characteristics of Port Galera Light from Fl(3)R.3s18m7M to Fl.R.5s18m10M  
at: 13° 30.8' N., 120° 57.7' E.

ENC affected: PH2CVZ40  
(NAMRIA Survey Report, HD 263/20)

### **\*10(051)20 – LUZON, W. COAST, Manila Bay – Light**

Chart 1501 1Ed 02/02/2012 [WGS-84 Datum] Last NM 09(049)20



Delete  Fl.5s at: 14° 42.81' N., 120° 52.29' E.

Chart 4255 2Ed 01/06/1975 Rev 06/17/1985 [Luzon Datum] Last NM 09(049)20


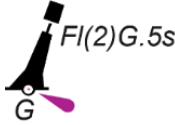
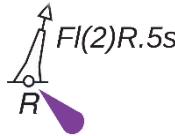

Delete  Fl.5s at: 14° 42.90' N., 120° 52.20' E.

ENC affected: PH2NLZ40  
(Philippine Coast Guard, HD 264/20)

## II NOTICES TO MARINERS

### \*10(052)20 – MINDANAO, SE. COAST, Davao Gulf, Malalag Bay – Buoys. Light

Chart 1523 1Ed 06/28/2017 [WGS-84 Datum] Last NM 09(046)20

- Insert  *VQ(9)10s* at: 06° 38.19' N., 125° 25.61' E.
-  *FI(2)G.5s* at: 06° 37.92' N., 125° 25.10' E.  
06° 37.55' N., 125° 24.89' E.  
06° 37.01' N., 125° 24.94' E.  
06° 36.48' N., 125° 24.98' E.  
06° 36.06' N., 125° 25.09' E.
-  *FI(2)R.5s* at: 06° 37.95' N., 125° 24.69' E.  
06° 37.53' N., 125° 24.50' E.  
06° 37.02' N., 125° 24.52' E.  
06° 36.52' N., 125° 24.55' E.  
06° 36.08' N., 125° 24.74' E.
-  *Q* at: 06° 35.69' N., 125° 24.94' E.

Amend characteristics of Colapsin Light from FI.R.5s74m15M to FI(2)5s74m12M  
at: 06° 37.88' N., 125° 25.70' E.




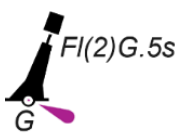
- Delete  *FI.3s* at: 06° 38.74' N., 125° 24.40' E.
-  *FI.R.3s* at: 06° 37.93' N., 125° 24.14' E.

Chart 4608 1Ed 11/04/1968 Rev 10/06/1980 [Luzon Datum] Last NM 09(046)20

- Insert  *VQ(9)10s* at: 06° 38.28' N., 125° 25.52' E.
-  *FI(2)G.5s* at: 06° 38.01' N., 125° 25.01' E.  
06° 37.64' N., 125° 24.80' E.  
06° 37.09' N., 125° 24.85' E.  
06° 36.57' N., 125° 24.89' E.  
06° 36.15' N., 125° 25.00' E.

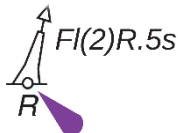
## II

### NOTICES TO MARINERS

**\*10(052)20 – MINDANAO, SE. COAST, Davao Gulf, Malalag Bay – Buoys. Light  
(continued)**

Chart 4608 1Ed 11/04/1968 Rev 10/06/1980 [Luzon Datum] Last NM 09(046)20

Insert



at: 06° 38.03' N., 125° 24.60' E.  
 06° 37.61' N., 125° 24.41' E.  
 06° 37.11' N., 125° 24.43' E.  
 06° 36.60' N., 125° 24.47' E.  
 06° 36.16' N., 125° 24.65' E.



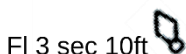
at: 06° 35.77' N., 125° 24.85' E.

Amend characteristics of Colapsin Light from FI.R.5s74m15M to FI(2)5s74m12M  
 at: 06° 37.97' N., 125° 25.62' E.

Delete



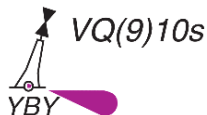
at: 06° 38.10' N., 125° 23.97' E.



at: 06° 38.88' N., 125° 24.25' E.

Chart 4656 1Ed 02/16/1933 Rev 09/08/1975 [Luzon Datum] Last NM 04(018)19

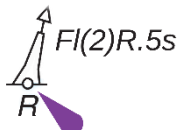
Insert



at: 06° 38' 16.6"N., 125° 25' 31.2"E.



at: 06° 38' 00.3"N., 125° 25' 00.4"E.  
 06° 37' 38.2"N., 125° 24' 47.8"E.  
 06° 37' 05.6"N., 125° 24' 50.9"E.  
 06° 36' 34.0"N., 125° 24' 53.2"E.  
 06° 36' 08.8"N., 125° 24' 59.9"E.



at: 06° 38' 01.8"N., 125° 24' 35.8"E.  
 06° 37' 36.5"N., 125° 24' 24.6"E.  
 06° 37' 06.4"N., 125° 24' 25.6"E.  
 06° 36' 36.1"N., 125° 24' 27.9"E.  
 06° 36' 09.5"N., 125° 24' 39.1"E.



at: 06° 35' 46.1"N., 125° 24' 51.1"E.

Amend characteristics of Colapsin Light from FI.R.5s74m15M to FI(2)5s74m12M  
 at: 06° 37' 58.1"N., 125° 25' 37.0"E.

## II NOTICES TO MARINERS

### **\*10(052)20 – MINDANAO, SE. COAST, Davao Gulf, Malalag Bay – Buoy. Light (continued)**

Chart 4708 2Ed 11/2010 [WGS-84 Datum] Last NM 06(030)20

Amend characteristics of Colapsin Light from Fl.R.5s74m15M to Fl(2)5s74m12M  
at: 06° 37.9' N., 125° 25.7' E.

ENC affected: PH2CMN40  
(NAMRIA Survey Report 2020 & PCG NM No. 156 of 2020; HD 265/20 & 267/20)

### **\*10(053)20 – MINDANAO, SE. COAST, Davao Gulf, Pakiputan Strait – Buoy.**


Chart 1523 1Ed 06/28/2017 [WGS-84 Datum] Last NM 10(052)20

Delete  *VQ(9)10s* at: 07° 06.07' N., 125° 39.63' E.

Chart 4624 2Ed 12/02/1991 [Luzon Datum] Last NM 07(039)18

Delete  *VQ(9)10s* at: 07° 06.15' N., 125° 39.54' E.

Chart 4656 1Ed 02/16/1933 Rev 09/08/1975 [Luzon Datum] Last NM 10(052)20

Delete  *VQ(9)10s* at: 07° 06' 09.0"N., 125° 39' 32.6"E.

ENC affected: PH2CMN40  
(PCG NM No. 129 of 2020; HD 268/20)

### **\*10(054)20 – PANAY, SE. COAST, Iloilo Strait – Buoy.**

Chart 4448 2Ed 08/30/2016 [WGS-84 Datum] Last NM 10(065)19

Delete  *Fl(2)R.5s* at: 10° 45.02' N., 122° 37.25' E.

ENC affected: PH2CVZ40  
(PCG NM No. 121 of 2020; HD 269/20)

### III

## LIST OF LIGHTS CORRECTIONS

NUMBER (1)	NAME (2)	POSITION (3)	CHARACTERISTICS (4)	Elev(m) (5)	Range(NM) (6)	STRUCTURE (7)	REMARKS (8)
<b>REGION III – CENTRAL LUZON</b>							
<b>BULACAN</b>							
0546	F2642.6	BULACAN					DELETED from the List of Lights
<b>REGION IV-B – MIMAROPA</b>							
<b>MINDORO ORIENTAL</b>							
0151	F2562	PORT GALERA	13 30 46 N 120 57 40 E *	FI R 5s *	18 *	10 *	White concrete column, 3 Datum *
0152	F2560	ESCARCEO POINT	13 31 17 N 120 59 32 E *	FI W 10s		10	White aluminum tower Vis 112°-020°(268°) In WGS-84 Datum *
0153	F2564	VARADERO	13 30 08 N 120 57 18 E *	FI G 5s	26	10	White concrete tower Datum *
0154	F2558	CALAPAN	13 25 48 N 121 11 42 E	FI W 5s	11	10	White concrete column, 7 Vis 071°-198°(127°) In WGS-84 Datum <b>TE 2020</b> *
<b>REGION VI – WESTERN VISAYAS</b>							
<b>ILOILO</b>							
		<i>I-SHM 4</i>					DELETED from the List of Lights
<b>REGION XI – DAVAO REGION</b>							
<b>DAVAO DEL SUR</b>							
0390	F2230	COLAPSIN	06 37 53 N 125 25 42 E *	FI(2)W 5s *	74	12	White GRP tower Datum *
		<i>D WCM6</i>					DELETED from the List of Lights
		<i>MB WCM A</i>	06 38 12 N 125 25 37 E	VQ(9) W 10s		8	Yellow with horizontal black band pillar buoy. Topmark: top cone pointing downward and bottom cone pointing upward. Datum *
		<i>MB NCM B</i>	06 35 41 N 125 24 56 E	Q W		8	Black with yellow band pillar buoy. Topmark: two cones pointing upward Datum *
		<i>MB LPM-1</i>	06 37 55 N 125 25 06 E	FI(2)G 5s		8	Green pillar buoy. Topmark: single green cylinder Lateral Port Hand Mark. MMSI No. 995481464. In WGS-84 Datum *
		*	*	*		*	*

Note: Asterisk “\*” indicates new information in the column above it.

### III

## LIST OF LIGHTS CORRECTIONS

NUMBER (1)	NAME (2)	POSITION (3)	CHARACTERISTICS (4)	Elev(m) (5)	Range(NM) (6)	STRUCTURE (7)	REMARKS (8)
<b>REGION XI – DAVAO REGION</b>							
<b>DAVAO DEL SUR</b>							
	<i>MB LSM-2</i>	06 37 57 N 125 24 41 E	Fl(2)R 5s		8	Red pillar buoy. Topmark: single cone pointing upward	Lateral Starboard Hand Mark. MMSI No. 995481465. In WGS-84 Datum
	*	*	*		*	*	*
	<i>MB LPM-3</i>	06 37 33 N 125 24 53 E	Fl(2)G 5s		8	Green pillar buoy. Topmark: single green cylinder	Lateral Port Hand Mark. In WGS-84 Datum
	*	*	*		*	*	*
	<i>MB LSM-4</i>	06 37 32 N 125 24 30 E	Fl(2)R 5s		8	Red pillar buoy. Topmark: single cone pointing upward	Lateral Starboard Hand Mark. In WGS-84 Datum
	*	*	*		*	*	*
	<i>MB LPM-5</i>	06 37 01 N 125 24 56 E	Fl(2)G 5s		8	Green pillar buoy. Topmark: single green cylinder	Lateral Port Hand Mark. In WGS-84 Datum
	*	*	*		*	*	*
	<i>MB LSM-6</i>	06 37 01 N 125 24 31 E	Fl(2)R 5s		8	Red pillar buoy. Topmark: single cone pointing upward	Lateral Starboard Hand Mark. In WGS-84 Datum
	*	*	*		*	*	*
	<i>MB LPM-7</i>	06 36 29 N 125 24 59 E	Fl(2)G 5s		8	Green pillar buoy. Topmark: single green cylinder	Lateral Port Hand Mark. MMSI No. 995481470. In WGS-84 Datum
	*	*	*		*	*	*
	<i>MB LSM-8</i>	06 36 31 N 125 24 33 E	Fl(2)R 5s		8	Red pillar buoy. Topmark: single cone pointing upward	Lateral Starboard Hand Mark. MMSI No. 995481471. In WGS-84 Datum
	*	*	*		*	*	*
	<i>MB LPM-9</i>	06 36 04 N 125 25 05 E	Fl(2)G 5s		8	Green pillar buoy. Topmark: single green cylinder	Lateral Port Hand Mark. In WGS-84 Datum
	*	*	*		*	*	*
	<i>MB LSM-10</i>	06 36 05 N 125 24 44 E	Fl(2)R 5s		8	Red pillar buoy. Topmark: single cone pointing upward	Lateral Starboard Hand Mark. MMSI No. 995481473. In WGS-84 Datum
	*	*	*		*	*	*

Note: Asterisk “\*” indicates new information in the column above it.

# III

## COAST PILOT CORRECTIONS

### Philippine Coast Pilot, 7th Ed. Volume 1

#### Chapter 6 – Mindoro Island

Page 6-7, left column, lines 11-12. Replace by:

**Major Lights** - Port Galera Light (13° 30' 46"N., 120° 57' 40"E.), which is the front range beacon, is shown on the

Page 6-7, left column, line 15. Replace by:

Varadero Light (13° 30' 08"N., 120° 57' 40"E.),

Page 6-8, right column, line 49-50. Replace by:

**Major Light** - Escarceo Point Light (13° 31' 17"N., 120° 59' 32"E.), is displayed from a white tower on Escarceo

## **IV NAVIGATIONAL WARNINGS**

Date: 08 November 2018

Reference: PCG NTM 258-2018 (HD 288/18)

### **MESSAGE**

---

**NAVPHIL 173/18 – LUZON, W. COAST, PASIG RIVER – REHABILITATION**

**NAPINDAN HYDRAULIC CONTROL SYSTEM IS BEING REHABILITATED FROM 05 NOVEMBER 2018 TO 11 MARCH 2022 WITHIN THE VICINITY OF THE FOLLOWING COORDINATES:**

**14° 33' 28"N., 121° 04' 06"E.**

**14° 33' 26"N., 121° 04' 10"E.**

**ALL SHIPS/WATERCRAFTS TRANSITING THE VICINITY OF THE ABOVE-MENTIONED AREA ARE ADVISED TO TAKE NOTE OF THE INFORMATION AND TAKE NECESSARY PRECAUTIONARY MEASURES AT ALL TIMES.**



## **IV NAVIGATIONAL WARNINGS**

Date: 30 January 2020

Reference: PCG NTM 013-2020 (HD 013/20)

### MESSAGE

**NAVPIL 012/20 – LUZON, W. COAST, MARIKINA RIVER – BRIDGE CONSTRUCTION**

**NWSTEEL TECHNOLOGIES INC. IS CONDUCTING CONSTRUCTION OF CIRCULO VERDE ACCESS BRIDGE ALONG MARIKINA RIVER FROM JANUARY TO DECEMBER 2020 AT THE FOLLOWING POSITIONS:**

<b>Pt A</b>	<b>14° 35' 59.91"N., 121° 05' 24.43"E.</b>
<b>Pt B</b>	<b>14° 35' 59.09"N., 121° 05' 24.10"E.</b>
<b>Pt C</b>	<b>14° 35' 59.30"N., 121° 05' 26.73"E.</b>
<b>Pt D</b>	<b>14° 35' 58.53"N., 121° 05' 26.55"E.</b>

**ALL SHIPS/WATERCRAFTS TRANSITING THE VICINITY OF THE ABOVE-MENTIONED AREA ARE ADVISED TO TAKE NOTE OF THE INFORMATION AND TAKE NECESSARY PRECAUTIONARY MEASURES AT ALL TIMES.**

## **IV**

# **NAVIGATIONAL WARNINGS**

Date: 12 February 2020

Reference: PCG NTM 028-2020 (HD 028/20)

### MESSAGE

#### **NAVPHIL 021/20 – PHILIPPINE WATERS – HEALTH PREVENTIVE MEASURE**

**Notice is hereby given to all mariners and other parties concerned that:**

**1. Reference: Department of Health, Department Circular No. 2020-0034 dated 04 February 2020.**

**2. The Department of Health circulated guidelines at all seaports for prevention and spread of 2019-nCov in lieu to the declaration of the World Health Organization (WHO) on the 2019-nCov ARD as a Public Health Emergency of International Concern (PHEIC) that entails the urgent need to coordinate international efforts to investigate and better understand the same to minimize threat in affected countries and to reduce the risk of further international spread.**

**3. His Excellency President Rodrigo Roa Duterte had issued a temporary travel ban for those travelers coming from China, including Hong Kong and Macau Special Administrative Region (SAR). In line with such directive, the Bureau of Quarantine shall be implementing the following measures effective immediately at all seaport for all maritime vessels:**

#### **A. For Cruise Vessel**

**A.1 All Cruise Ships with passengers, regardless of nationality, from China, Macau and Hong Kong SAR or had passed through in the past fourteen (14) days are not allowed to dock at any Philippine port.**

**A.2 All Cruise Ships not calling on the ports of China, Macau and Hong Kong SAR within the last fourteen (14) days are allowed to dock in Philippine ports. They must undergo complete screening measures, submission of duly-accomplished Maritime Declaration of Health, and other pertinent documents related to 2019-nCoV ARD.**

**A.3 All Cruise Ships allowed to dock must declare all travel itineraries/excursions in the Philippines.**

*Continued to the next page.*

## **IV**

### **NAVIGATIONAL WARNINGS**

**A.4 The master of vessel must report immediately any occurrence of flu-like symptoms (e.g fever, cough, colds, body weakness and difficulty of breathing). In an event of flu like manifestation arise, the master must immediately report to the Quarantine Medical Officer (QMO) for guidance on implementing infection prevention and control protocols to minimize the spread of infection on board.**

**A.5 The QMO will conduct triaging of case/s using current Case Definition. (Please refer to Annex1 Decision Tool for nCoV ARD Assessment for BoQ and Hospitals as January 30, 2020)**

**A.6 No Filipinos are allowed to embark in any cruise ship going to China.**

#### **B. For Cargo Vessels**

**B.1 All vessels calling from China, including Hong Kong and Macau SAR, in the past fourteen (14) days must be boarded at the quarantine anchorage.**

**B.2 Upon arrival at quarantine anchorage, the master of vessel must hoist at its foremast the yellow flag and inform immediately the Quarantine station at assigned port through ship agents. Strictly no embarkation/disembarkation policy.**

**B.3 Quarantine Boarding formalities shall ensue - the master of the vessel shall submit a duly accomplished Maritime Declaration of Health and BOQ shall issue free pratique. Other boarding formalities shall commence.**

**B.4 Vessels cleared at the first port of entry and calling another local port, which within the past 14 days travelled from China, Hong Kong and Macau SAR, must be boarded at the designated Quarantine anchorage area by QMO, submit duly accomplished Maritime Declaration of Health and other pertinent documents.**

**B.5 The master of vessel must report immediately any occurrence of flu-like symptoms (e.g fever, cough, colds, body weakness and difficulty of breathing). In an event of flu like manifestation arise, the master must immediately report to the QMO for guidance on implementing infection prevention and control protocols to minimize the spread of infection on board.**

**B.6 The QMO will conduct triaging of case/s using current Case Definition. (Please refer to Annex 1 Decision Tool for nCoV ARD Assessment for BoQ and Hospitals as January 30, 2020)**

*Continued to the next page.*

## **IV**

### **NAVIGATIONAL WARNINGS**

**B.7 Ship agent of Vessel with PUI situated in a non-competent port will arrange the immediate diversion of the vessel to the nearest competent port (Manila and Cebu) in the Philippine territory.**

**B.8 PUI in a competent port will be conducted to a dedicated hospital and the vessel will be declared as affected vessel. A confirmed laboratory result of case will commence a 14-day quarantine at the anchorage and hoist the Lima flag. Day zero starts at the conduction of the PUI.**

**On the 14" day, the QMO will board the vessel, examine the documents, muster the crew and issue a free pratique. The master of vessel may then lower down yellow flag, and other formalities will commence.**

#### **C. General Preventive Measures**

**C.1 Continue hygienic practices and sanitary measures at all times.**

**C.2 Waste disposal of vessels coming in from China, including Hong Kong and Macau SAR, in the past fourteen (14) days, are not allowed in Philippine ports.**

**4. In this connection, all ships/watercrafts transiting Philippine waters are advised to take cognizance of the information and adhere to the strict implementation of aforementioned measures.**

# IV NAVIGATIONAL WARNINGS

Date: 03 September 2020

Reference: PCG NTM 102-2020 (HD 223/20)

## MESSAGE

---

### NAVPHIL 108/20 – LUZON, W. COAST, MANILA BAY – GEO-TECHNICAL WORKS

ULTICON BUILDERS, INC., IS CONDUCTING GEO-TECHNICAL INVESTIGATION WORKS OFF PASAY CITY UNTIL 31 DECEMBER 2020 WITHIN THE AREA BOUNDED BY THE FOLLOWING COORDINATES:

POINT	COORDINATES
1	14° 33' 07.18"N., 120° 57' 47.12"E.
2	14° 33' 16.04"N., 120° 57' 37.12"E.
3	14° 33' 11.05"N., 120° 55' 08.81"E.
4	14° 32' 36.83"N., 120° 55' 08.76"E.
5	14° 32' 16.67"N., 120° 55' 13.46"E.
6	14° 32' 33.29"N., 120° 56' 26.95"E.

ALL SHIPS/WATERCRAFTS TRANSITING THE VICINITY OF THE ABOVE-MENTIONED AREAS ARE ADVISED TO TAKE NOTE OF THE INFORMATION AND TAKE NECESSARY PRECAUTIONARY MEASURES AT ALL TIMES.

# IV NAVIGATIONAL WARNINGS

Date: 22 September 2020

Reference: TDGSMI Email (HD 225/20)

## MESSAGE

---

### NAVPHIL 116/20 – PHILIPPINE WATERS – CABLE WORKS

TDG SHIPMANAGEMENT, INC. (TDGSMI) UTILIZING “C/S SUBARU” IS CONDUCTING CABLE INSTALLATION AND REPAIRS FROM 28 SEPTEMBER 2020 – 12 NOVEMBER 2020 ALONG THE ROUTES DEFINED BY THE FOLLOWING COORDINATES:

**POSITION      COORDINATES**  
**BUENAVISTA, MARINDUQUE TO ROMBLON**

<b>BMH</b>	<b>12° 34.8277'N., 122° 15.7684'E.</b>
<b>1</b>	<b>12° 34.8308'N., 122° 15.7655'E.</b>
<b>2</b>	<b>12° 34.8395'N., 122° 15.7611'E.</b>
<b>3</b>	<b>12° 34.9041'N., 122° 15.7545'E.</b>
<b>4</b>	<b>12° 34.9068'N., 122° 15.7542'E.</b>
<b>5</b>	<b>12° 34.9095'N., 122° 15.7539'E.</b>
<b>6</b>	<b>12° 34.9104'N., 122° 15.7538'E.</b>
<b>7</b>	<b>12° 34.9126'N., 122° 15.7536'E.</b>
<b>8</b>	<b>12° 34.9418'N., 122° 15.7506'E.</b>
<b>9</b>	<b>12° 34.9633'N., 122° 15.7484'E.</b>
<b>10</b>	<b>12° 35.0580'N., 122° 15.7062'E.</b>
<b>11</b>	<b>12° 35.1299'N., 122° 15.5663'E.</b>
<b>12</b>	<b>12° 35.2674'N., 122° 15.4568'E.</b>
<b>13</b>	<b>12° 35.6067'N., 122° 15.4624'E.</b>
<b>14</b>	<b>12° 36.3960'N., 122° 15.7126'E.</b>
<b>15</b>	<b>12° 36.9033'N., 122° 16.0059'E.</b>
<b>16</b>	<b>12° 37.5689'N., 122° 16.4334'E.</b>
<b>17</b>	<b>12° 37.5871'N., 122° 16.4449'E.</b>
<b>18</b>	<b>12° 37.7427'N., 122° 16.4838'E.</b>
<b>19</b>	<b>12° 37.8892'N., 122° 16.5203'E.</b>
<b>20</b>	<b>12° 37.9203'N., 122° 16.5276'E.</b>
<b>21</b>	<b>12° 37.9742'N., 122° 16.5302'E.</b>
<b>22</b>	<b>12° 38.1644'N., 122° 16.5392'E.</b>
<b>23</b>	<b>12° 39.3729'N., 122° 16.2592'E.</b>
<b>24</b>	<b>12° 39.5387'N., 122° 16.2208'E.</b>
<b>25</b>	<b>12° 39.7564'N., 122° 16.1703'E.</b>
<b>26</b>	<b>12° 41.4852'N., 122° 15.1292'E.</b>
<b>27</b>	<b>12° 42.8426'N., 122° 14.7461'E.</b>
<b>28</b>	<b>12° 51.3717'N., 122° 10.5614'E.</b>
<b>29</b>	<b>12° 51.7709'N., 122° 10.3446'E.</b>
<b>30</b>	<b>12° 53.5461'N., 122° 08.7677'E.</b>

*Continued to the next page.*

## IV NAVIGATIONAL WARNINGS

31	12° 53.5707'N., 122° 08.7459'E.
32	12° 53.7041'N., 122° 08.6273'E.
33	12° 53.7496'N., 122° 08.6086'E.
34	12° 53.8049'N., 122° 08.5858'E.
35	12° 53.8588'N., 122° 08.5636'E.
36	12° 55.0840'N., 122° 08.0593'E.
37	12° 57.7518'N., 122° 06.9608'E.
38	13° 08.2121'N., 122° 00.1053'E.
39	13° 11.3129'N., 121° 57.7409'E.
40	13° 12.5820'N., 121° 56.7728'E.
41	13° 13.8174'N., 121° 56.2153'E.
42	13° 14.0456'N., 121° 56.1921'E.
43	13° 14.0857'N., 121° 56.1881'E.
44	13° 14.1208'N., 121° 56.1846'E.
45	13° 14.1669'N., 121° 56.1798'E.
46	13° 14.2645'N., 121° 56.1888'E.
47	13° 14.3789'N., 121° 56.2237'E.
48	13° 14.4611'N., 121° 56.2795'E.
49	13° 14.7118'N., 121° 56.4490'E.
50	13° 14.7832'N., 121° 56.4743'E.
51	13° 14.9085'N., 121° 56.4911'E.
52	13° 14.9174'N., 121° 56.4920'E.
53	13° 14.9251'N., 121° 56.4928'E.
54	13° 14.9677'N., 121° 56.4971'E.
55	13° 15.0665'N., 121° 56.5071'E.
56	13° 15.1533'N., 121° 56.5159'E.
BMH	13° 15.2031'N., 121° 56.5334'E.

### ROMBLON, ROMBLON TO CARMEN, TABLAS ISLAND

BMH	12° 34.4099'N., 122° 14.9608'E.
1	12° 34.4147'N., 122° 14.9609'E.
2	12° 34.4336'N., 122° 14.9614'E.
3	12° 34.4855'N., 122° 14.9491'E.
4	12° 34.4887'N., 122° 14.9483'E.
5	12° 34.4929'N., 122° 14.9473'E.
6	12° 34.4946'N., 122° 14.9469'E.
7	12° 34.4976'N., 122° 14.9462'E.
8	12° 34.5427'N., 122° 14.9354'E.
9	12° 34.5873'N., 122° 14.9076'E.
10	12° 34.6682'N., 122° 14.7776'E.
11	12° 34.6829'N., 122° 14.6926'E.
12	12° 34.6385'N., 122° 14.4148'E.
13	12° 34.5989'N., 122° 14.3393'E.
14	12° 34.3313'N., 122° 14.1414'E.
15	12° 34.2163'N., 122° 13.8192'E.

*Continued to the next page.*

## IV NAVIGATIONAL WARNINGS

16	12° 34.2443'N., 122° 13.6400'E.
17	12° 34.2879'N., 122° 13.3604'E.
18	12° 34.2978'N., 122° 13.3438'E.
19	12° 34.6357'N., 122° 12.7781'E.
20	12° 35.3315'N., 122° 11.6131'E.
21	12° 35.5683'N., 122° 11.2166'E.
22	12° 35.7783'N., 122° 10.8022'E.
23	12° 35.8699'N., 122° 10.6215'E.
24	12° 36.1783'N., 122° 10.0128'E.
25	12° 36.3227'N., 122° 09.2120'E.
26	12° 36.3090'N., 122° 09.0679'E.
27	12° 36.3179'N., 122° 09.0137'E.
28	12° 36.3221'N., 122° 09.0045'E.
29	12° 36.3411'N., 122° 08.9631'E.
30	12° 36.9240'N., 122° 08.3151'E.
31	12° 37.0472'N., 122° 08.0216'E.
32	12° 37.0772'N., 122° 07.7560'E.
33	12° 37.0768'N., 122° 07.7522'E.
34	12° 37.0614'N., 122° 07.5926'E.
35	12° 37.0402'N., 122° 07.5221'E.
36	12° 37.0289'N., 122° 07.4847'E.
37	12° 37.0235'N., 122° 07.4666'E.
38	12° 37.0138'N., 122° 07.4344'E.
39	12° 37.0006'N., 122° 07.3906'E.
40	12° 36.9871'N., 122° 07.3458'E.
41	12° 36.9870'N., 122° 07.3280'E.
BMH	12° 36.9873'N., 122° 07.3197'E.

### ALCANTARA, TABLAS ISLAND TO CAJIDIOCAN, SIBUYAN

BMH	12° 15.4346'N., 122° 03.3056'E.
1	12° 15.4252'N., 122° 03.3443'E.
2	12° 15.4357'N., 122° 03.4270'E.
3	12° 15.4421'N., 122° 03.4771'E.
4	12° 15.4701'N., 122° 03.6975'E.
5	12° 15.4802'N., 122° 03.7768'E.
6	12° 15.4852'N., 122° 03.8160'E.
7	12° 15.4941'N., 122° 03.8861'E.
8	12° 15.4964'N., 122° 03.9042'E.
9	12° 15.5705'N., 122° 04.4861'E.
10	12° 15.5706'N., 122° 04.4983'E.
11	12° 15.5885'N., 122° 06.3605'E.
12	12° 15.5901'N., 122° 06.5219'E.
13	12° 15.5866'N., 122° 06.6671'E.
14	12° 15.5856'N., 122° 06.7091'E.
15	12° 15.5788'N., 122° 06.9885'E.

*Continued to the next page.*



## IV

### NAVIGATIONAL WARNINGS

16	12° 15.5566'N., 122° 07.9088'E.
17	12° 15.5252'N., 122° 09.1994'E.
18	12° 09.9610'N., 122° 32.6605'E.
19	12° 10.2625'N., 122° 35.3632'E.
20	12° 10.7856'N., 122° 36.6694'E.
21	12° 11.7680'N., 122° 39.1235'E.
22	12° 12.7872'N., 122° 40.2856'E.
23	12° 19.1870'N., 122° 43.8582'E.
24	12° 20.3711'N., 122° 44.0996'E.
25	12° 21.2020'N., 122° 43.9975'E.
26	12° 21.8088'N., 122° 43.5494'E.
27	12° 22.0076'N., 122° 43.0792'E.
28	12° 22.1182'N., 122° 42.8178'E.
29	12° 22.2192'N., 122° 42.2767'E.
30	12° 22.2425'N., 122° 42.1520'E.
31	12° 22.2613'N., 122° 42.0514'E.
32	12° 22.2466'N., 122° 41.8698'E.
33	12° 22.2466'N., 122° 41.8564'E.
34	12° 22.2455'N., 122° 41.4829'E.
35	12° 22.2428'N., 122° 41.4739'E.
36	12° 22.2409'N., 122° 41.4677'E.
37	12° 22.2352'N., 122° 41.4487'E.
38	12° 22.2217'N., 122° 41.4038'E.
39	12° 22.1950'N., 122° 41.3150'E.
BMH	12° 22.1880'N., 122° 41.3040'E.

#### CAJIDIOCAN TO MANDAON, MASBATE

BMH	12° 22.2979'N., 122° 41.2186'E.
1	12° 22.3070'N., 122° 41.2340'E.
2	12° 22.3380'N., 122° 41.3336'E.
3	12° 22.3590'N., 122° 41.4009'E.
4	12° 22.3659'N., 122° 41.4230'E.
5	12° 22.3683'N., 122° 41.4308'E.
6	12° 22.3718'N., 122° 41.4420'E.
7	12° 22.3832'N., 122° 41.4785'E.
8	12° 22.3840'N., 122° 41.6488'E.
9	12° 22.4033'N., 122° 41.9084'E.
10	12° 22.4078'N., 122° 41.9690'E.
11	12° 22.4100'N., 122° 42.1220'E.
12	12° 22.4196'N., 122° 42.7762'E.
13	12° 22.4220'N., 122° 42.9376'E.
14	12° 22.8425'N., 122° 45.8530'E.
15	12° 22.6382'N., 122° 48.5983'E.
16	12° 21.5744'N., 122° 52.6379'E.
17	12° 20.1241'N., 122° 55.0191'E.

*Continued to the next page.*

## IV

### NAVIGATIONAL WARNINGS

18	12° 17.5757'N., 122° 59.2009'E.
19	12° 17.4165'N., 122° 59.4930'E.
20	12° 14.7474'N., 123° 04.3888'E.
21	12° 14.6976'N., 123° 04.4802'E.
22	12° 14.6720'N., 123° 04.5353'E.
23	12° 14.3745'N., 123° 05.1761'E.
24	12° 14.3218'N., 123° 05.2895'E.
25	12° 14.2324'N., 123° 05.4030'E.
26	12° 14.1529'N., 123° 05.5040'E.
27	12° 13.9358'N., 123° 05.9781'E.
28	12° 13.8193'N., 123° 06.1191'E.
29	12° 13.2806'N., 123° 07.0755'E.
30	12° 13.2563'N., 123° 07.1237'E.
31	12° 12.8042'N., 123° 08.0196'E.
32	12° 12.4829'N., 123° 09.1954'E.
33	12° 12.4122'N., 123° 09.4542'E.
34	12° 12.4001'N., 123° 09.5420'E.
35	12° 12.4604'N., 123° 09.8996'E.
36	12° 12.0765'N., 123° 12.7708'E.
37	12° 12.1026'N., 123° 13.1305'E.
38	12° 12.1572'N., 123° 13.2953'E.
39	12° 12.2983'N., 123° 13.7207'E.
40	12° 12.4052'N., 123° 14.0430'E.
41	12° 12.5139'N., 123° 14.3709'E.
42	12° 12.7597'N., 123° 15.1125'E.
43	12° 13.1628'N., 123° 16.3284'E.
44	12° 13.2163'N., 123° 16.4898'E.
45	12° 13.3663'N., 123° 16.9425'E.
46	12° 13.3957'N., 123° 17.0279'E.
47	12° 13.4029'N., 123° 17.0413'E.
48	12° 13.4383'N., 123° 17.0958'E.
BMH	12° 13.4365'N., 123° 17.0972'E.

#### VIRAC, CATANDUANES TO CATARMAN

BMH	13° 35.1789'N., 124° 14.3852'E.
1	13° 35.1391'N., 124° 14.4183'E.
2	13° 34.9819'N., 124° 14.5954'E.
3	13° 34.6685'N., 124° 14.9485'E.
4	13° 34.5838'N., 124° 15.0440'E.
5	13° 34.5310'N., 124° 15.1035'E.
6	13° 34.5046'N., 124° 15.1445'E.
7	13° 34.4727'N., 124° 15.1941'E.
8	13° 34.2373'N., 124° 15.5603'E.
9	13° 33.0770'N., 124° 16.3023'E.
10	13° 29.0124'N., 124° 18.2007'E.

*Continued to the next page.*

## IV NAVIGATIONAL WARNINGS

11	13° 29.0095'N., 124° 18.2012'E.
12	13° 28.7859'N., 124° 18.2419'E.
13	13° 28.6511'N., 124° 18.3910'E.
14	13° 28.3897'N., 124° 18.5287'E.
15	13° 28.2176'N., 124° 18.6194'E.
16	13° 27.5818'N., 124° 18.7880'E.
17	13° 27.3161'N., 124° 18.8584'E.
18	13° 27.0368'N., 124° 19.0805'E.
19	13° 25.9502'N., 124° 20.0803'E.
20	13° 25.3848'N., 124° 20.4606'E.
21	13° 24.6334'N., 124° 20.9659'E.
22	13° 13.9506'N., 124° 27.1230'E.
23	13° 10.7770'N., 124° 27.6848'E.
24	13° 09.5341'N., 124° 27.9048'E.
25	13° 06.8262'N., 124° 27.3034'E.
26	13° 05.0296'N., 124° 26.9045'E.
27	13° 04.4725'N., 124° 26.8470'E.
28	13° 04.2131'N., 124° 26.8202'E.
29	13° 03.5430'N., 124° 27.0103'E.
30	13° 00.2705'N., 124° 29.5066'E.
31	12° 58.0502'N., 124° 31.1995'E.
32	12° 56.4548'N., 124° 34.0645'E.
33	12° 53.5647'N., 124° 40.7118'E.
34	12° 52.4408'N., 124° 42.4323'E.
35	12° 51.3427'N., 124° 43.2083'E.
36	12° 49.9263'N., 124° 44.3437'E.
37	12° 49.1272'N., 124° 44.3955'E.
38	12° 47.6264'N., 124° 43.8304'E.
39	12° 46.5650'N., 124° 43.7221'E.
40	12° 45.8751'N., 124° 43.4859'E.
41	12° 45.3903'N., 124° 43.4695'E.
42	12° 44.8123'N., 124° 43.7595'E.
43	12° 44.5547'N., 124° 43.7429'E.
44	12° 44.3134'N., 124° 43.5204'E.
45	12° 44.1145'N., 124° 43.0653'E.
46	12° 43.9788'N., 124° 42.8595'E.
47	12° 43.9361'N., 124° 42.7948'E.
48	12° 43.6004'N., 124° 42.5745'E.
49	12° 42.4213'N., 124° 42.0626'E.
50	12° 41.9806'N., 124° 41.5711'E.
51	12° 41.9117'N., 124° 41.5290'E.
52	12° 41.3313'N., 124° 41.4433'E.
53	12° 41.2497'N., 124° 41.4312'E.
54	12° 40.8680'N., 124° 41.4277'E.
55	12° 40.0943'N., 124° 41.4205'E.

*Continued to the next page.*

## **IV NAVIGATIONAL WARNINGS**

56 12° 39.8989'N., 124° 41.3792'E.  
57 12° 39.8645'N., 124° 41.3601'E.  
58 12° 39.2693'N., 124° 41.0303'E.  
59 12° 32.1066'N., 124° 38.3896'E.  
60 12° 31.8507'N., 124° 38.2917'E.  
61 12° 31.8502'N., 124° 38.2915'E.  
62 12° 31.5114'N., 124° 38.1619'E.  
63 12° 31.3304'N., 124° 38.0926'E.  
64 12° 30.8943'N., 124° 37.9258'E.  
65 12° 30.7049'N., 124° 37.8533'E.  
66 12° 30.5315'N., 124° 37.7870'E.  
BMH 12° 30.2889'N., 124° 37.6758'E.

**ALL SHIPS/WATERCRAFTS TRANSITING THE VICINITY OF THE ABOVE-  
MENTIONED AREAS ARE ADVISED TO TAKE NOTE OF THE INFORMATION  
AND TAKE NECESSARY PRECAUTIONARY MEASURES AT ALL TIMES.**

**CANCEL THIS NAVIGATIONAL WARNING ON 13 NOVEMBER 2020.**

## **IV NAVIGATIONAL WARNINGS**

Date: 23 September 2020

Reference: PCG NTM 110-2020 (HD 234/20)

### MESSAGE

---

#### **NAVPHIL 117/20 – LUZON, W. COAST, PASIG RIVER – BRIDGE WORKS**

**MAC BUILDERS WILL CONDUCT RETROFITTING AND STRENGTHENING OF C.P. GARCIA BRIDGE ALONG C-5 ROAD, PASIG CITY FROM SEPTEMBER 2020 – DECEMBER 2020 ON PLACES AS INDICATED:**

<b>PIER 4A</b>	<b>14° 33' 37"N., 121° 03' 58"E.</b>
<b>PIER 4B</b>	<b>14° 33' 38"N., 121° 03' 57"E.</b>
<b>PIER 5A</b>	<b>14° 33' 38"N., 121° 03' 58"E.</b>
<b>PIER 5B</b>	<b>14° 33' 38"N., 121° 03' 57"E.</b>
<b>PIER 6A</b>	<b>14° 33' 39"N., 121° 03' 59"E.</b>
<b>PIER 6B</b>	<b>14° 33' 39"N., 121° 03' 58"E.</b>

**ALL SHIPS/WATERCRAFTS TRANSITING THE VICINITY OF THE ABOVE-MENTIONED AREAS ARE ADVISED TO TAKE NOTE OF THE INFORMATION AND TAKE NECESSARY PRECAUTIONARY MEASURES AT ALL TIMES.**

**CANCEL THIS NAVIGATIONAL WARNINGS ON 01 JANUARY 2021.**

# IV NAVIGATIONAL WARNINGS

Date: 28 September 2020

Reference: TDGSMI Email (HD 237/20)

## MESSAGE

---

### NAVPHIL 119/20 – VERDE IS. PASSAGE TO TABLAS STRAIT – CABLE WORKS

TDG SHIP MANAGEMENT, INC. (TDGSMI) UTILIZING “CS SUBARU” IS CONDUCTING CABLE INSTALLATIONS AND REPAIRS FROM 28 SEPTEMBER – 12 NOVEMBER 2020 ALONG THE ROUTES DEFINED BY THE FOLLOWING COORDINATES:

**POSITION                      COORDINATES**  
**LOBO, BATANGAS TO BOAC, MARINDUQUE**

<b>BMH</b>	<b>13° 38.2762'N., 121° 11.6970'E.</b>
<b>1</b>	<b>13° 38.2654'N., 121° 11.6756'E.</b>
<b>2</b>	<b>13° 38.2551'N., 121° 11.6678'E.</b>
<b>3</b>	<b>13° 38.2429'N., 121° 11.6447'E.</b>
<b>4</b>	<b>13° 38.1761'N., 121° 11.5838'E.</b>
<b>5</b>	<b>13° 38.1723'N., 121° 11.5798'E.</b>
<b>6</b>	<b>13° 38.1675'N., 121° 11.5746'E.</b>
<b>7</b>	<b>13° 38.1630'N., 121° 11.5698'E.</b>
<b>8</b>	<b>13° 38.1612'N., 121° 11.5679'E.</b>
<b>9</b>	<b>13° 38.1585'N., 121° 11.5650'E.</b>
<b>10</b>	<b>13° 38.0904'N., 121° 11.4924'E.</b>
<b>11</b>	<b>13° 38.0312'N., 121° 11.4293'E.</b>
<b>12</b>	<b>13° 37.8872'N., 121° 11.2557'E.</b>
<b>13</b>	<b>13° 37.8870'N., 121° 11.2555'E.</b>
<b>14</b>	<b>13° 37.8075'N., 121° 11.1596'E.</b>
<b>15</b>	<b>13° 37.7768'N., 121° 11.1222'E.</b>
<b>16</b>	<b>13° 37.7464'N., 121° 11.0854'E.</b>
<b>17</b>	<b>13° 37.6805'N., 121° 11.0055'E.</b>
<b>18</b>	<b>13° 37.5665'N., 121° 10.8675'E.</b>
<b>19</b>	<b>13° 37.3383'N., 121° 10.7310'E.</b>
<b>20</b>	<b>13° 37.0890'N., 121° 10.6899'E.</b>
<b>21</b>	<b>13° 36.7876'N., 121° 10.7271'E.</b>
<b>22</b>	<b>13° 35.8213'N., 121° 11.4573'E.</b>
<b>23</b>	<b>13° 35.5652'N., 121° 11.6508'E.</b>
<b>24</b>	<b>13° 35.3980'N., 121° 12.0613'E.</b>
<b>25</b>	<b>13° 34.0161'N., 121° 15.4529'E.</b>
<b>26</b>	<b>13° 33.8018'N., 121° 17.1451'E.</b>
<b>27</b>	<b>13° 31.0003'N., 121° 39.1275'E.</b>
<b>28</b>	<b>13° 30.9933'N., 121° 39.1824'E.</b>
<b>29</b>	<b>13° 30.9862'N., 121° 30.2373'E.</b>
<b>30</b>	<b>13° 30.2654'N., 121° 44.8508'E.</b>

*Continued to the next page.*

## IV NAVIGATIONAL WARNINGS

31	13° 29.9562'N., 121° 46.1720'E.
32	13° 29.4599'N., 121° 48.2921'E.
33	13° 29.4563'N., 121° 48.3076'E.
34	13° 29.4064'N., 121° 48.5204'E.
35	13° 29.3484'N., 121° 48.6495'E.
36	13° 29.2769'N., 121° 48.8099'E.
37	13° 28.9607'N., 121° 49.1712'E.
38	13° 28.7667'N., 121° 49.3594'E.
39	13° 28.7553'N., 121° 49.3705'E.
40	13° 28.7489'N., 121° 49.3767'E.
41	13° 28.4739'N., 121° 49.3815'E.
42	13° 28.7140'N., 121° 49.4105'E.
43	13° 28.5414'N., 121° 49.5781'E.
44	13° 28.3930'N., 121° 49.7220'E.
BMH	13° 28.3865'N., 121° 49.7265'E.

### PINAMALAYAN, MINDORO TO LAYLAY, MARINDUQUE

BMH	13° 02.0862'N., 121° 29.5665'E.
1	13° 02.0677'N., 121° 29.6035'E.
2	13° 01.9792'N., 121° 29.8959'E.
3	13° 01.9789'N., 121° 29.9017'E.
4	13° 01.9687'N., 121° 30.0961'E.
5	13° 01.9655'N., 121° 30.1563'E.
6	13° 01.9645'N., 121° 30.1742'E.
7	13° 01.9635'N., 121° 30.1938'E.
8	13° 01.9560'N., 121° 30.3366'E.
9	13° 01.9319'N., 121° 30.5568'E.
10	13° 01.8829'N., 121° 30.6956'E.
11	13° 01.8674'N., 121° 30.7712'E.
12	13° 01.8661'N., 121° 30.8758'E.
13	13° 01.9938'N., 121° 31.2729'E.
14	13° 02.2152'N., 121° 31.9615'E.
15	13° 02.2152'N., 121° 31.9616'E.
16	13° 02.2693'N., 121° 32.2892'E.
17	13° 02.3774'N., 121° 32.9434'E.
18	13° 02.2692'N., 121° 33.3326'E.
19	13° 02.2367'N., 121° 33.4494'E.
20	13° 02.2219'N., 121° 33.5026'E.
21	13° 02.2071'N., 121° 33.5558'E.
22	13° 02.1167'N., 121° 33.8808'E.
23	13° 02.2689'N., 121° 34.5779'E.
24	13° 02.4458'N., 121° 35.3879'E.
25	13° 02.8421'N., 121° 37.2040'E.

*Continued to the next page*

## IV NAVIGATIONAL WARNINGS

26	13° 02.8895'N., 121° 37.4216'E.
27	13° 02.9013'N., 121° 37.4756'E.
28	13° 02.9131'N., 121° 37.5296'E.
29	13° 02.9605'N., 121° 37.7471'E.
30	13° 03.4246'N., 121° 39.8755'E.
31	13° 04.7235'N., 121° 41.6200'E.
32	13° 06.8788'N., 121° 43.5605'E.
33	13° 06.9194'N., 121° 43.5971'E.
34	13° 06.9600'N., 121° 43.6337'E.
35	13° 07.7127'N., 121° 44.3115'E.
36	13° 08.5137'N., 121° 44.5490'E.
37	13° 15.1174'N., 121° 45.0186'E.
38	13° 20.4254'N., 121° 44.6707'E.
39	13° 23.0227'N., 121° 45.5726'E.
40	13° 23.0235'N., 121° 45.5733'E.
41	13° 25.6678'N., 121° 47.7816'E.
42	13° 25.6928'N., 121° 47.8388'E.
43	13° 25.7794'N., 121° 48.0372'E.
44	13° 25.8020'N., 121° 48.1425'E.
45	13° 25.8018'N., 121° 48.3647'E.
46	13° 25.8348'N., 121° 48.6283'E.
47	13° 25.9064'N., 121° 48.8398'E.
48	13° 25.9093'N., 121° 48.8483'E.
49	13° 25.9114'N., 121° 48.8547'E.
50	13° 25.9182'N., 121° 48.8746'E.
51	13° 25.9370'N., 121° 48.9301'E.
52	13° 26.0099'N., 121° 49.1455'E.
BMH	13° 26.0194'N., 121° 49.1739'E.

ALL SHIPS/WATERCRAFTS TRANSITING THE VICINITY OF THE ABOVE-MENTIONED AREAS ARE ADVISED TO TAKE NOTE OF THE INFORMATION AND TAKE NECESSARY PRECAUTIONARY MEASURES AT ALL TIMES.

NOTE: THIS CANCELS NAVPHIL 110/20.

CANCEL THIS NAVIGATIONAL WARNING ON 13 NOVEMBER 2020.



## **IV NAVIGATIONAL WARNINGS**

Date: 30 September 2020

Reference: PCG NOTAM 113-2020 (HD 239/20)

### **MESSAGE**

---

**NAVPHIL 122/20 – LUZON, E. COAST, PASIG RIVER – GEOTECHNICAL  
INVESTIGATION WORKS**

**THE CADCOR BUILDERS AND TRADING CORPORATION IS  
CONDUCTING GEOTECHNICAL INVESTIGATION WORKS ALONG PASIG  
RIVER FROM AUGUST 2020 TO DECEMBER 2020 IN THE AREA BOUNDED  
BY THE FOLLOWING COORDINATES:**

14° 35' 09.60" N., 121° 00' 25.20" E.  
14° 35' 27.59" N., 121° 00' 46.80" E.  
14° 35' 57.60" N., 121° 03' 25.20" E.  
14° 35' 21.59" N., 121° 02' 59.99" E.

**ALL SHIPS/WATERCRAFTS TRANSITING THE VICINITY OF THE ABOVE-  
MENTIONED AREAS ARE ADVISED TO TAKE NOTE OF THE INFORMATION  
AND TAKE NECESSARY PRECAUTIONARY MEASURES AT ALL TIMES.**

**CANCEL THIS NAVIGATIONAL WARNING ON 01 JANUARY 2021.**

# IV NAVIGATIONAL WARNINGS

Date: 06 October 2020

Reference: PCG NTM 125 – 2020 (HD 245/20)

## MESSAGE

### NAVPHIL 125/20 – LUZON, W. COAST, MANILA BAY – GEOTECHNICAL WORKS

THE GEOTECHNICS COMPANY, UTILIZING A DECK BARGE AND TUG BOAT, IS CONDUCTING MARINE GEOTECHNICAL INVESTIGATION WORKS OFF THE COAST OF CAVITE FROM PROVINCE FROM 01 OCTOBER 2020 TO 31 DECEMBER 2020 IN THE AREA BOUNDED BY THE FOLLOWING COORDINATES:

POSITION	COORDINATES
1	14° 28' 17.9076"N., 120° 46' 51.0006"E.
2	14° 28' 17.9076"N., 120° 47' 57.9012"E.
3	14° 29' 22.6608"N., 120° 47' 57.9012"E.
4	14° 28' 50.2860"N., 120° 48' 31.3452"E.
5	14° 29' 22.6608"N., 120° 49' 04.7928"E.
6	14° 28' 50.2860"N., 120° 49' 38.2404"E.
7	14° 29' 22.6608"N., 120° 50' 11.6880"E.
8	14° 29' 22.6608"N., 120° 51' 18.5832"E.
9	14° 29' 55.0392"N., 120° 51' 52.0272"E.
10	14° 30' 59.7960"N., 120° 45' 44.1072"E.
11	14° 30' 59.7960"N., 120° 46' 51.0024"E.
12	14° 30' 59.7960"N., 120° 47' 57.8976"E.
13	14° 30' 59.7960"N., 120° 49' 04.7892"E.
14	14° 30' 59.7960"N., 120° 50' 11.6844"E.
15	14° 30' 59.7960"N., 120° 51' 18.5796"E.
16	14° 30' 59.7960"N., 120° 52' 25.4748"E.
17	14° 32' 04.5492"N., 120° 49' 04.7892"E.
18	14° 33' 09.3060"N., 120° 49' 04.7892"E.

ALL SHIPS/WATERCRAFTS TRANSITING THE VICINITY OF THE ABOVE-MENTIONED AREAS ARE ADVISED TO TAKE NOTE OF THE INFORMATION AND TAKE NECESSARY PRECAUTIONARY MEASURES AT ALL TIMES.

CANCEL THIS NAVIGATIONAL WARNING ON 01 JANUARY 2021.

# IV NAVIGATIONAL WARNINGS

Date: 06 October 2020

Reference: PCG NTM 126 – 2020 (HD 246/20)

## MESSAGE

**NAVPHIL 126/20 – LUZON, W. COAST, MANILA BAY – GEOPHYSICAL SURVEY**

**EGS ASIA INC., UTILIZING MV GEMINI 2, WILL CONDUCT GEOPHYSICAL SURVEY FROM 07 OCTOBER TO 15 NOVEMBER 2020 OFF THE COAST OF CAVITE PROVINCE OR WITHIN THE AREA BOUNDED BY THE FOLLOWING COORDINATES:**

POINT	COORDINATES
1	14° 32' 29"N., 120° 45' 23"E.
2	14° 32' 34"N., 120° 54' 44"E.
3	14° 27' 59"N., 120° 51' 49"E.
4	14° 27' 55"N., 120° 45' 26"E.

**ALL SHIPS/WATERCRAFTS TRANSITING THE VICINITY OF THE ABOVE-MENTIONED AREAS ARE ADVISED TO TAKE NOTE OF THE INFORMATION AND TAKE NECESSARY PRECAUTIONARY MEASURES AT ALL TIMES.**

**CANCEL THIS NAVIGATIONAL WARNING ON 16 NOVEMBER 2020.**

# IV

## NAVIGATIONAL WARNINGS

Date: 13 October 2020

Reference: PCG NTM 135 – 2020 (HD 249/20)

### MESSAGE

---

#### NAVPHIL 130/20 – PHILIPPINE WATERS – GUNNERY

THE PHILIPPINE NAVY (PN) VESSELS WILL CONDUCT TEST FIRING OF THEIR NAVAL GUNS ON DATES AND PLACES AS INDICATED:

A. BA488, BA489, AND BA491 ON 05-08 NOVEMBER 2020 AT VICINITY 10.27 NAUTICAL MILES NORTHWEST OFF LANGUYAN POINT, LANGUYAN, TAWITAWI IN THE AREA BOUNDED BY THE FOLLOWING COORDINATES:

POINT A:	05° 25.598'N., 119° 52.895'E.
POINT B:	05° 31.750'N., 119° 52.900'E.
POINT C:	05° 31.750'N., 119° 59.170'E.
POINT D:	05° 25.600'N., 119° 59.170'E.

B. BA485 ON 09 NOVEMBER 2020 AT VICINITY 2 NAUTICAL MILES SOUTHWEST OFF CORREGIDOR ISLAND, TERNATE, CAVITE IN THE AREA BOUNDED BY THE FOLLOWING COORDINATES:

POINT A:	14° 21.483'N., 120° 32.159'E.
POINT B:	14° 21.108'N., 120° 28.062'E.
POINT C:	14° 17.027'N., 120° 28.315'E.
POINT D:	14° 17.263'N., 120° 32.456'E.

C. BA484 AND PC389 ON 09-11 NOVEMBER 2020 AT VICINITY 14.5 NAUTICAL MILES SOUTHWEST OFF GUNTAO ISLAND, PALAWAN IN THE AREA BOUNDED BY THE FOLLOWING COORDINATES:

POINT A:	11° 05.464'N., 118° 59.015'E.
POINT B:	11° 05.490'N., 119° 04.121'E.
POINT C:	11° 00.394'N., 119° 04.210'E.
POINT D:	11° 00.365'N., 118° 59.041'E.

D. PC386 ON 14-16 DECEMBER 2020 AT VICINITY 11.8 NAUTICAL MILES EAST OFF MATANAL POINT, BASILAN IN THE AREA BOUNDED BY THE FOLLOWING COORDINATES:

POINT A:	06° 38.758'N., 122° 28.819'E.
POINT B:	06° 38.730'N., 122° 33.958'E.
POINT C:	06° 33.636'N., 122° 33.904'E.
POINT D:	06° 33.613'N., 122° 28.841'E.

*Continued to the next page*

## **IV NAVIGATIONAL WARNINGS**

**ALL SHIPS/WATERCRAFTS TRANSITING THE VICINITY OF THE ABOVE-MENTIONED AREA ARE ADVISED TO TAKE NOTE OF THE INFORMATION AND TAKE NECESSARY PRECAUTIONARY MEASURES AT ALL TIMES.**

**CANCEL THIS NOTICE ON 17 DECEMBER 2020.**

# IV

## NAVIGATIONAL WARNINGS

Date: 19 October 2020

Reference: PCG NTM 139 – 2020 (HD 251/20)  
PCG NTM 140 – 2020 (HD 252/20)

### MESSAGE

---

#### NAVPHIL 132/20 – PHILIPPINE WATERS – GUNNERY

THE PHILIPPINE NAVY (PN) VESSELS WILL CONDUCT TEST FIRING OF THEIR NAVAL GUNS ON DATES AND PLACES AS INDICATED:

- A. PB356 AND PB358 ON 10 NOVEMBER 2020 AT VICINITY 7 NAUTICAL MILES EAST OFF CARMEN, CEBU IN THE AREA BOUNDED BY THE FOLLOWING COORDINATES:

POINT A:	10° 38.403'N., 124° 08.431'E.
POINT B:	10° 38.445'N., 124° 10.594'E.
POINT C:	10° 36.417'N., 124° 08.438'E.
POINT D:	10° 36.417'N., 124° 11.060'E.

- B. PC371 ON 11-12 NOVEMBER 2020 AT VICINITY 5 NAUTICAL MILES SOUTH OFF SIATON POINT, SIATON, NEGROS ORIENTAL IN THE AREA BOUNDED BY THE FOLLOWING COORDINATES:

POINT A:	08° 57.132'N., 122° 56.965'E.
POINT B:	08° 57.135'N., 123° 07.092'E.
POINT C:	08° 47.069'N., 123° 07.086'E.
POINT D:	08° 47.067'N., 122° 56.966'E.

- C. PB357 AND PB359 ON 13 NOVEMBER 2020 AT VICINITY 2 NAUTICAL MILES SOUTHWEST OFF CORREGIDOR ISLAND, TERNATE, CAVITE IN THE AREA BOUNDED BY THE FOLLOWING COORDINATES:

POINT A:	14° 21.483'N., 120° 32.159'E.
POINT B:	14° 21.108'N., 120° 28.062'E.
POINT C:	14° 17.027'N., 120° 28.315'E.
POINT D:	14° 17.623'N., 120° 32.456'E.

*Continued to the next page*

## **IV NAVIGATIONAL WARNINGS**

**D. BA492 AND BA493 ON 18-19 NOVEMBER 2020 AT VICINITY 8.5 NAUTICAL MILES NORTHWEST OFF TEINGA ISLAND, BASILAN IN THE AREA BOUNDED BY THE FOLLOWING COORDINATES:**

<b>POINT A:</b>	<b>07° 00.000'N., 121° 25.000'E.</b>
<b>POINT B:</b>	<b>06° 55.000'N., 121° 25.000'E.</b>
<b>POINT C:</b>	<b>06° 55.000'N., 121° 30.000'E.</b>
<b>POINT D:</b>	<b>07° 00.000'N., 121° 30.000'E.</b>

**E. LC295 ON 26 NOVEMBER 2020 AT VICINITY 16.1 NAUTICAL MILES NORTH OFF CANLOAY POINT, SIBUYAN IN THE AREA BOUNDED BY THE FOLLOWING COORDINATES:**

<b>POINT A:</b>	<b>12° 47.02'N., 122° 35.01'E.</b>
<b>POINT B:</b>	<b>12° 47.02'N., 122° 39.01'E.</b>
<b>POINT C:</b>	<b>12° 44.05'N., 122° 39.01'E.</b>
<b>POINT D:</b>	<b>12° 44.05'N., 122° 35.01'E.</b>

**ALL SHIPS/WATERCRAFTS TRANSITING THE VICINITY OF THE ABOVE-MENTIONED AREAS ARE ADVISED TO TAKE NOTE OF THE INFORMATION AND TAKE NECESSARY PRECAUTIONARY MEASURES AT ALL TIMES.**

**CANCEL THIS NAVIGATIONAL WARNING ON 27 NOVEMBER 2020.**

# IV NAVIGATIONAL WARNINGS

Date: 20 October 2020

Reference: TDGSMI Email (HD 253/20)

## MESSAGE

---

### NAVPHIL 133/20 – PHILIPPINE WATERS – CABLE WORKS

TDG SHIP MANAGEMENT, INC. (TDGSMI), UTILIZING “CS SUBARU” IS CONDUCTING CABLE INSTALLATION AND REPAIR STARTING 03 SEPTEMBER 2020 TO 02 DECEMBER 2020 ALONG THE ROUTES CONNECTED BY THE FOLLOWING COORDINATES:

**POSITION                      COORDINATES**  
**PIO CORPUS, MASBATE TO TAPILON, DAAN BANTAYAN**

1	11° 53.1190'N.,	124° 03.0147'E.
2	11° 54.1615'N.,	124° 06.8456'E.
3	11° 50.2159'N.,	124° 08.5598'E.
4	11° 44.7787'N.,	124° 08.6466'E.
5	11° 41.9887'N.,	124° 07.3971'E.
6	11° 36.9226'N.,	124° 08.3546'E.
7	11° 29.7908'N.,	124° 09.8998'E.
8	11° 23.4157'N.,	124° 04.8898'E.
9	11° 19.4704'N.,	124° 03.1384'E.
10	11° 18.5602'N.,	124° 01.8886'E.
11	11° 16.7066'N.,	124° 01.8248'E.

**SAN JOSE, CARABAO ISLAND TO MANOCMANOC, BORACAY**

1	12° 03.6749'N.,	121° 57.5958'E.
2	12° 03.5929'N.,	121° 58.0132'E.
3	12° 02.9229'N.,	121° 58.6286'E.
4	12° 00.0276'N.,	121° 58.5725'E.
5	11° 58.5067'N.,	121° 58.2109'E.
6	11° 57.8010'N.,	121° 57.6803'E.
7	11° 57.3292'N.,	121° 57.3069'E.
8	11° 56.9576'N.,	121° 56.8305'E.

**MANOCMANOC, BORACAY TO CATIKLAN, AKLAN**

1	11° 56.9576'N.,	121° 56.8305'E.
2	11° 57.0994'N.,	121° 57.0540'E.
3	11° 57.2221'N.,	121° 57.2513'E.
4	11° 56.7538'N.,	121° 58.0115'E.
5	11° 56.5547'N.,	121° 57.7995'E.
6	11° 56.2951'N.,	121° 57.2749'E.

*Continued to the next page*



## **IV NAVIGATIONAL WARNINGS**

### **PINAMALAYAN, MINDORO TO LAYLAY, MARINDUQUE**

1	13° 02.0862'N.,	121° 29.5665'E.
2	13° 02.2152'N.,	121° 31.9615'E.
3	13° 02.1167'N.,	121° 33.8808'E.
4	13° 02.8421'N.,	121° 37.2040'E.
5	13° 02.9605'N.,	121° 37.7471'E.
6	13° 06.9600'N.,	121° 43.6337'E.
7	13° 15.1174'N.,	121° 45.0186'E.
8	13° 23.0235'N.,	121° 45.5733'E.
9	13° 25.7794'N.,	121° 48.0372'E.
10	13° 25.9114'N.,	121° 48.8547'E.
11	13° 26.0194'N.,	121° 49.1739'E.

**ALL SHIPS/WATERCRAFTS TRANSITING THE VICINITY OF THE ABOVE-MENTIONED AREAS ARE ADVISED TO TAKE NOTE OF THE INFORMATION AND TAKE NECESSARY PRECAUTIONARY MEASURES AT ALL TIMES.**

**CANCEL THIS NOTICE ON 03 DECEMBER 2020.**

# IV

## NAVIGATIONAL WARNINGS

Date: 21 October 2020

Reference: PCG NTM 142-2020 (HD 254/20)

### MESSAGE

---

#### NAVPHIL 134/20 – PHILIPPINE WATERS – GUNNERY

THE PHILIPPINE NAVY (PN) VESSELS WILL CONDUCT TEST FIRING OF THEIR NAVAL GUNS ON DATES AND PLACES AS INDICATED:

- A. BRP NESTOR REINOSO (PC380) ON 09-11 NOVEMBER 2020 IN THE WEST PHILIPPINE SEA AT VICINITY 14.5 NAUTICAL MILES SOUTHWEST OFF GUNTAO ISLAND, PALAWAN IN THE AREA BOUNDED BY THE FOLLOWING COORDINATES:

POINT A:	11° 05.464'N., 118° 59.015'E.
POINT B:	11° 05.490'N., 119° 04.121'E.
POINT C:	11° 00.394'N., 119° 04.210'E.
POINT D:	11° 00.365'N., 118° 59.041'E.

- B. BRP JUAN MAGLUYAN (PC392) ON 12-13 NOVEMBER 2020 AT VICINITY 10.28 NAUTICAL MILES NORTHWEST OFF LANGUYAN ISLAND, TAWI-TAWI IN THE AREA BOUNDED BY THE FOLLOWING COORDINATES:

POINT A:	05° 25.598'N., 119° 52.895'E.
POINT B:	05° 31.750'N., 119° 52.900'E.
POINT C:	05° 31.750'N., 119° 59.170'E.
POINT D:	05° 25.600'N., 119° 59.170'E.

ALL SHIPS/WATERCRAFTS TRANSITING THE VICINITY OF THE ABOVE-MENTIONED AREA ARE ADVISED TO TAKE NOTE OF THE INFORMATION AND TAKE NECESSARY PRECAUTIONARY MEASURES AT ALL TIMES.

CANCEL THIS NOTICE ON 14 NOVEMBER 2020.

# IV NAVIGATIONAL WARNINGS

Date: 21 October 2020

Reference: PCG NTM 145-2020 (HD 255/20)

## MESSAGE

---

### NAVPHIL 135/20 – MINDANAO, N. COAST, BOHOL SEA – CABLE LAYING

TRANSPOWER BUILDERS AND DEVELOPMENT CORP. (TBDC), UTILIZING “C/S SKAGERRAK” WILL CONDUCT CABLE LAYING ON 28 OCTOBER 2020 TO 20 JANUARY 2021 FROM BRGY. TAG-ULO, DAPITAN CITY TO SANTANDER, CEBU ALONG THE ROUTE DEFINED BY THE FOLLOWING COORDINATES:

POSITION	COORDINATES
1	08° 43.67'N., 123° 22.88'E.
2	08° 45.02'N., 123° 24.92'E.
3	08° 48.54'N., 123° 26.70'E.
4	08° 50.58'N., 123° 28.28'E.
5	08° 54.60'N., 123° 27.49'E.
6	09° 04.09'N., 123° 19.29'E.
7	09° 06.87'N., 123° 21.13'E.
8	09° 15.53'N., 123° 22.02'E.
9	09° 17.80'N., 123° 23.34'E.
10	09° 20.62'N., 123° 23.60'E.
11	09° 22.38'N., 123° 22.96'E.
12	09° 25.01'N., 123° 20.74'E.

ALL SHIPS/WATERCRAFTS TRANSITING THE VICINITY OF THE ABOVE-MENTIONED AREAS ARE ADVISED TO TAKE NOTE OF THE INFORMATION AND TAKE NECESSARY PRECAUTIONARY MEASURES AT ALL TIMES.

CANCEL THIS NAVIGATIONAL WARNING ON 21 JANUARY 2021.

# IV NAVIGATIONAL WARNINGS

Date: 21 October 2020

Reference: PCG NTM 136-2020 (HD 250/20)

## MESSAGE

---

### NAVPHIL 137/20 – PHILIPPINE WATERS – CABLE INSTALLATION

BEN LINE AGENCIES PHILIPPINES, INC. UTILIZING “C/S RESOLUTE” IS CONDUCTING CABLE INSTALLATION STARTING 12 OCTOBER 2020 TO 11 JANUARY 2021 ALONG THE ROUTES DEFINED BY THE FOLLOWING COORDINATES:

#### WEST PHILIPPINE SEA TO BALER LANDING POINT

POINT	COORDINATES
A	20° 52.29'N., 118° 00.00'E.
B	20° 01.93'N., 119° 58.39'E.
C	20° 11.64'N., 123° 48.33'E.
D	20° 11.64'N., 123° 48.33'E.
E	16° 11.75'N., 123° 06.50'E.
F	15° 46.11'N., 121° 33.84'E.

#### WEST PHILIPPINE SEA TO SAN FERNANDO, LA UNION LANDING POINT

POINT	COORDINATES
G	20° 01.93'N., 119° 58.39'E.
H	16° 35.98'N., 120° 18.05'E.

ALL SHIPS/WATERCRAFTS TRANSITING THE VICINITY OF THE ABOVE-MENTIONED AREAS ARE ADVISED TO TAKE NOTE OF THE INFORMATION AND TAKE NECESSARY PRECAUTIONARY MEASURES AT ALL TIMES.

CANCEL THIS NAVIGATIONAL WARNING ON 12 JANUARY 2021.

THIS CANCELS NAVPHIL 131/20

## **V**

# **PUBLICATION NOTICES**

**1. Newly Published Electronic Navigational Charts (ENC):**

- a. PH3CPEGN – Cape Engaño to Lobod Point  
Scale 1: 90,000, 1<sup>st</sup> edition, 16<sup>th</sup> October 2020
  
- b. PH3LOBOD – Lobod Point to Dijohan Point  
Scale 1: 90,000, 1<sup>st</sup> edition, 16<sup>th</sup> October 2020

Call the NAMRIA Map Sales Office (MSO) – Manila Branch at telephone numbers (+632) 8245-9498 and (+632) 8241-3494 local 117 for details regarding the purchase of the abovementioned publications.

- 2. Mariners are requested to notify the Hydrography Branch, NAMRIA of any changes or discrepancies found on nautical charts and nautical publications issued by this office, especially if this affects navigational safety on Philippine Waters. Reported information may be sent using the Hydrographic Note or the Hydrographic Note for Port Information, which are on the succeeding pages.**

Reports may be sent through the following means:

Mail: NAMRIA – Hydrography Branch, 421 Barraca St., San Nicolas, Manila 1010  
Email: maritime.affairs@namria.gov.ph and maritime.concerns@gmail.com  
Fax: (+632) 8242-2955  
Onsite: <http://namria.gov.ph/omsis/HNote10.aspx>

**HYDROGRAPHIC NOTE**

Date \_\_\_\_\_

Ref. No. \_\_\_\_\_

Name of ship or sender \_\_\_\_\_ IMO No. \_\_\_\_\_

Address of sender \_\_\_\_\_  
\_\_\_\_\_

Telephone/Mobile No. \_\_\_\_\_ E-mail \_\_\_\_\_

Subject \_\_\_\_\_

General locality \_\_\_\_\_

Position: Latitude. \_\_\_\_\_ Longitude. \_\_\_\_\_

Position fixing system used \_\_\_\_\_ Datum \_\_\_\_\_

Charts affected \_\_\_\_\_ Edition \_\_\_\_\_

ENCs affected \_\_\_\_\_

Latest Notice to Mariners held \_\_\_\_\_

Nautical Publications affected (Edition No.) \_\_\_\_\_

Details of anomaly or observation:

A replacement copy of Chart No. \_\_\_\_\_  
is required (see Instruction 4).

Signature of observer/reporter \_\_\_\_\_

Tick box if not willing to be named as source of this information

## INSTRUCTIONS

1. Mariners are requested to notify the Hydrography Branch of the National Mapping and Resource Information Authority (NAMRIA) when new or suspected dangers to navigation are discovered, changes observed in aids to navigation, or corrections to publications that are seen to be necessary. Mariners can also report any ENC display issues experienced.
2. This form and its instructions have been designed to help both the sender and the recipient. It should be used, or followed, closely, whenever appropriate. Copies of this form may be obtained gratis from the Hydrography Branch at 421 Barraca St., San Nicolas, Manila, or by requesting thru email at [maritime.affairs@namria.gov.ph](mailto:maritime.affairs@namria.gov.ph).
3. **Position:** When a position is defined by sextant angles or bearings (true or magnetic being specified) more than two should be used in order to provide a check. Distances observed by radar should be quoted. However, when there is a series of fixes along a ship's course, only the method of fixing and the objects used need to be indicated. Latitude and longitude should only be used specifically to position the details when they have been fixed by astronomical observations or GPS and a full description of the method, equipment and datum used should be given.
4. **Paper Charts:** A cutting from the largest scale paper chart is the best medium for forwarding details, the alterations and additions being shown thereon in red. When requested, a new copy will be sent in replacement of a chart that has been used to forward information, or when extensive observations have involved defacement of the observer's chart. If it is preferred to show the amendments on a tracing of the largest scale chart (rather than the chart itself) these should be in red as above, but adequate detail from the chart must be traced in black ink to enable the amendments to be fitted correctly.

**Electronic Navigational Charts (ENCs):** A screen grab of the largest scale usage band ENC with the alterations and additions being shown thereon in red.

5. **Soundings:** When soundings are obtained, it is important to ensure that full details of the method of collection are included in this report. This include nut no limited to:
  - a. Make, model, and type of echo sounder used.
  - b. Whether the echo sounder is set to register depths below the surface or below the keel; in the latter case the vessel's draught should be given.
  - c. Time, date and time zone should be given in order that corrections for the height of the tide may be made where necessary, or a statement made as to what corrections for tide have already been made.
  - d. Where larger amounts of bathymetric data have been gathered, only those areas where a significant difference to the current chart or ENC should be specifically mentioned on the H102. The full data set may also be sent in, with an additional note added to this effect. If no significant differences are noted, the bathymetric data may still be of use, and sent in accordingly. Where full

data sets are included, a note as to the data owner and their willingness for the data to be incorporated into charts and ENC's included.

6. **For Echo Sounders that use electronic 'range gating'**, care should be taken that the correct range scale and appropriate gate width are in use. Older electro-mechanical echo sounders frequently record signals from echoes received back after one or more rotations of the stylus have been completed. Thus, with a set whose maximum range is 500m, an echo recorded at 50m may be from depths of 50m, 550m or even 1050m. Soundings recorded beyond the set's nominal range can usually be recognized by the following:
  - a. the trace being weaker than normal for the depth recorded;
  - b. the trace passing through the transmission line;
  - c. the feathery nature of the trace.

As a check that apparently shoal soundings are not due to echoes received beyond the set's nominal range, soundings should be continued until reasonable agreement with charted soundings is reached. However, soundings received after one or more rotations of the stylus can still be useful and should be submitted if they show significant differences from charted depths.

7. **Reports which cannot be confirmed or are lacking in certain details should not be withheld.** Shortcomings should be stressed and any firm expectation of being able to check the information on a succeeding voyage should be mentioned.
8. Changes to Port Information should be forwarded using Hydrographic Note for Port Information. Where there is insufficient space on the forms additional sheets should be used.
9. Reports using this form and relevant data should be sent either through mail at NAMRIA-Hydrography Branch, 421 Barraca St., San Nicolas, Manila or through email at [maritime.affairs@namria.gov.com](mailto:maritime.affairs@namria.gov.com) and [maritime.concerns@gmail.com](mailto:maritime.concerns@gmail.com).

An acknowledgement or receipt will be sent and the information then used to the best advantage which may mean immediate action or inclusion in a revision in due course; for these purposes, the NAMRIA-Hydrography Branch may make reproductions of any material supplied. When a Notice to Mariners is issued, the sender's ship or name is quoted as authority unless (as sometimes happens) the information is also received from other authorities or the sender states that they do not want to be named by using the appropriate tick box on the form. An explanation of the use made of contributions from all parts of the world would be too great a task and a further communication should only be expected when the information is of outstanding value or has unusual features.



NAMRIA  
HNC  
Form11 Rev00

## HYDROGRAPHIC NOTE FOR PORT INFORMATION

Date: \_\_\_\_\_

Name of Observer/Reporter: \_\_\_\_\_ IMO No. \_\_\_\_\_

Address of sender \_\_\_\_\_

Telephone/Mobile No. \_\_\_\_\_ E-mail \_\_\_\_\_

<b>Name of Port</b>			
<b>Approximate Position</b>	Latitude		Longitude
<b>Port Authority</b> Name and contact details			
<b>General Remarks</b>  Principal activities and trade. Latest population figures and date.  Number of ships or tonnage handled per year.  Maximum size of vessel handled.  Copy of Port Handbook ( <i>if available</i> ).			
<b>Berthing Facility</b> Type (L-pier, T-pier, wharf, etc.)  Names, numbers or positions & lengths.  Depths alongside.			
<b>Storage Facility</b> Area of open storage area and warehouse  Existence of reefer facilities, cold storage, and special storage facilities.			
<b>Anchorage</b> Position, designation, depths, holding ground, shelter afforded.			

<p><b>Pilotage</b>  Authority for requests.</p> <p>Pilot boarding position.</p> <p>Regulations (compulsory or not).</p> <p>Name of pilot association and contact details.</p>	
<p><b>Tugs</b>  Number available.</p> <p>Name of tug operator and contact details</p>	
<p><b>Directions</b>  Entry and berthing information.</p> <p>Tidal streams.</p> <p>Navigational aids.</p>	
<p><b>Small Craft Facility</b>  Name of yacht club, contact no., email address.</p>	
<p><b>Cargo Handling</b>  Containers, lighters, Ro-Ro etc.</p>	
<p><b>Repairs</b>  Hull, machinery and underwater.</p> <p>Shipyards.</p> <p>Docking or slipping facilities.  <i>(Give size of vessels handled or dimensions)</i></p> <p>Divers.</p>	
<p><b>Rescue and Distress</b>  Salvage, Lifeboat, Coastguard, etc.</p> <p>Name of nearest Coast Guard station and contact details.</p>	
<p><b>Supplies</b>  Fuel.  (with type, quantities and methods of delivery)</p> <p>Fresh water.  (with method of delivery and rate of supply)</p>	

Provisions.	
<b>Services</b> Medical.  Ship Sanitation.  Garbage and slops.  Ship chandlery, tank cleaning, compass adjustment, hull painting.	
<b>Communications</b> Nearest airport or airfield.  Port radio and information service. (with frequencies and hours of operating)	
<b>Government Services</b> Customs  Quarantine  Plant and Animal Quarantine  Immigration	
<b>Local Situation</b> Health facilities (nearest hospitals, clinics, health centers)  Banks and money remittance facilities	
<b>Views</b> Photographs (where permitted) of the approaches, leading marks, the entrance to the harbor etc.	
<b>Additional Details</b>	

Signature of observer/reporter \_\_\_\_\_

**Notes:**

1. This form lists the information required for Philippine Coast Pilot and has been designed to help the sender and the recipient. The sections should be used as an aide-memoir, being used or followed closely, whenever appropriate. Where there is insufficient space on the form an additional sheet should be used.
2. Reports which cannot be confirmed or are lacking in certain details should not be withheld. Shortcomings should be stressed and any firm expectation of being able to check the information on a succeeding voyage should be mentioned.

Nautical Charts, Topographic Maps, Tide and Current Tables and related publications are available for sale at the following NAMRIA Map Sales Offices (MSO):

**METRO MANILA:**

**NAMRIA Main Office MSO**

Fort Andres Bonifacio, Taguig City  
Contact Nos. (02) 8810-4831 to 42 local 431,  
(02) 8810-5467

**Manila MSO**

Hydrography Branch  
421 Barraca Street, San Nicolas, Manila  
Contact Nos. (02) 8241-3494 to 96 local 117,  
(02) 8245-9498

**DENR Central Office MSO**

Forest Management Bureau (FMB) Compound  
Visayas Avenue, Quezon City  
Contact Nos. (02) 8925-1157

**REGION I:**

**San Fernando (La Union) MSO**

DENR Government Center  
Sevilla, San Fernando City  
Contact Nos. (0999) 405-6917

**REGION II:**

**Cagayan MSO**

DENR – LEP, Building II  
Carig, Tuguegarao City  
Contact Nos. (0999) 309-3702

**CORDILLERA ADMINISTRATIVE REGION:**

**Baguio City MSO**

Cottage I Forester Compound,  
PACDAL, Baguio City  
Contact Nos. (074) 442-5429, (074) 442-4531,  
0918-9203590

**REGION III:**

**Nueva Ecija MSO**

GIS Room, WMRC Building,  
Central Luzon State University Compound  
Maharlika Highway, Muñoz City  
Contact Nos. (044) 456-0690, 0917-9313827

**Pampanga MSO**

Diosdado Macapagal Government Center  
Maimpis, San Fernando City  
Contact Nos. (0910) 372-5623

**REGION IV-A:**

**Southern Tagalog MSO**

Provincial Planning and Development Office  
Laurel Park, Capitol Site, Batangas City  
Contact Nos. (0905) 506-8681

**REGION IV-B:**

**Puerto Princesa MSO**

DENR-PENRO Compound,  
Brgy. Santa Monica, Puerto Princesa City  
Contact Nos. (048) 433-1391, (0918) 283-7045

**REGION V:**

**Legazpi City MSO**

DENR-Operation/Survey Division,  
Rizal St., Sagpon, Legazpi City  
Contact Nos. (052) 480-9825, (0920) 437-8877

**REGION VI:**

**Iloilo City MSO**

Manuel Lagunilla Bldg,  
DENR Compound, Parola, Iloilo City  
Contact Nos. (0919) 887-3862,

**REGION VII:**

**Cebu City MSO**

Room 301, Osmeña Bldg. II, Osmeña Blvd, Cebu City  
Contact Nos. (032) 505-9945, (0922) 791-0372

**REGION VIII:**

**Tacloban City MSO**

DENR Compound, Sto. Niño Extension, Tacloban City  
Contact Nos. (053) 325-6223, (053) 321-3386,  
0921-3628489

**REGION IX:**

**Zamboanga City MSO**

DENR CENRO West  
General Vicente Alvarez St., Zone 4, Zamboanga City  
Contact Nos. 0935-8609439

**Zamboanga del Sur MSO**

Pres. Corazon C. Aquino Regional Government,  
Center, Balintawak, Pagadian City, Zamboanga del Sur  
Contact Nos. 0907-2777422

**REGION X:**

**Cagayan de Oro City MSO**

Day Care Center Building, DENR-Compound,  
Macabalan (Puntod), Cagayan de Oro City  
Contact Nos. 0926-4148976

**REGION XI:**

**Davao City MSO**

Kilometer 7, SPED Road, Bangkal,  
Davao City  
Contact Nos. 0915-6127770

**REGION XII:**

**Koronadal City MSO**

DENR Region 12, Land Evaluation Party Office,  
Aurora Street, Koronadal City, South Cotabato  
Contact Nos. 0908-5459367, 0998-9840921

**CARAGA Administrative Region:**

**CARAGA MSO**

DENR Land Management Services Bldg.,  
Ambago, Butuan City, Agusan del Norte  
Contact Nos. (085) 342-6124, (085) 341-3250,  
0948-620-9442, 0926-683-5521